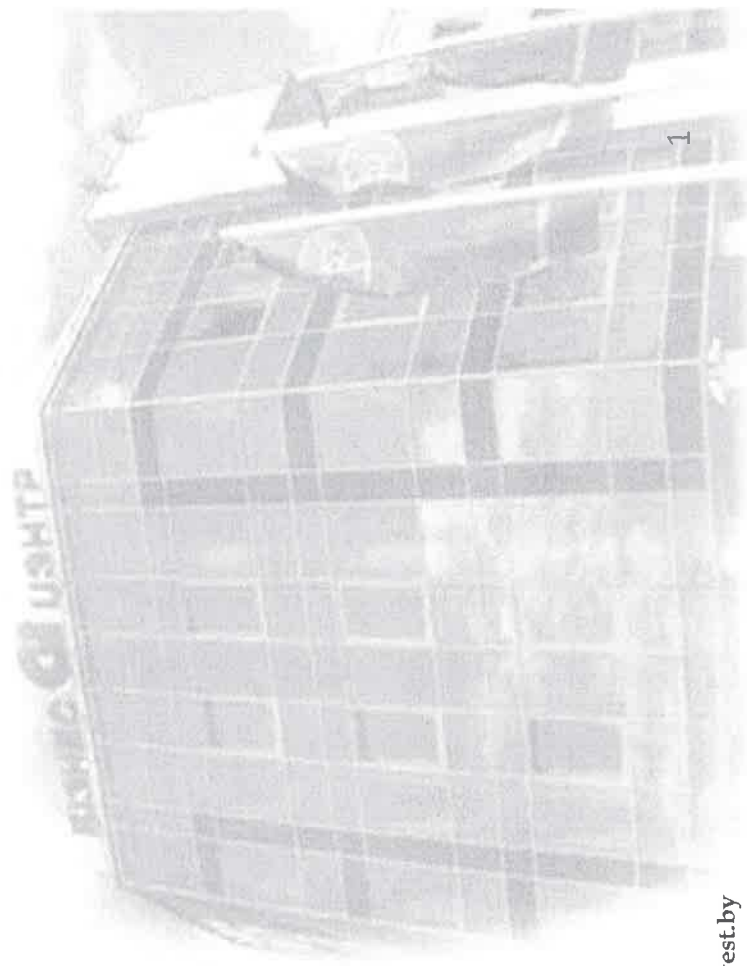
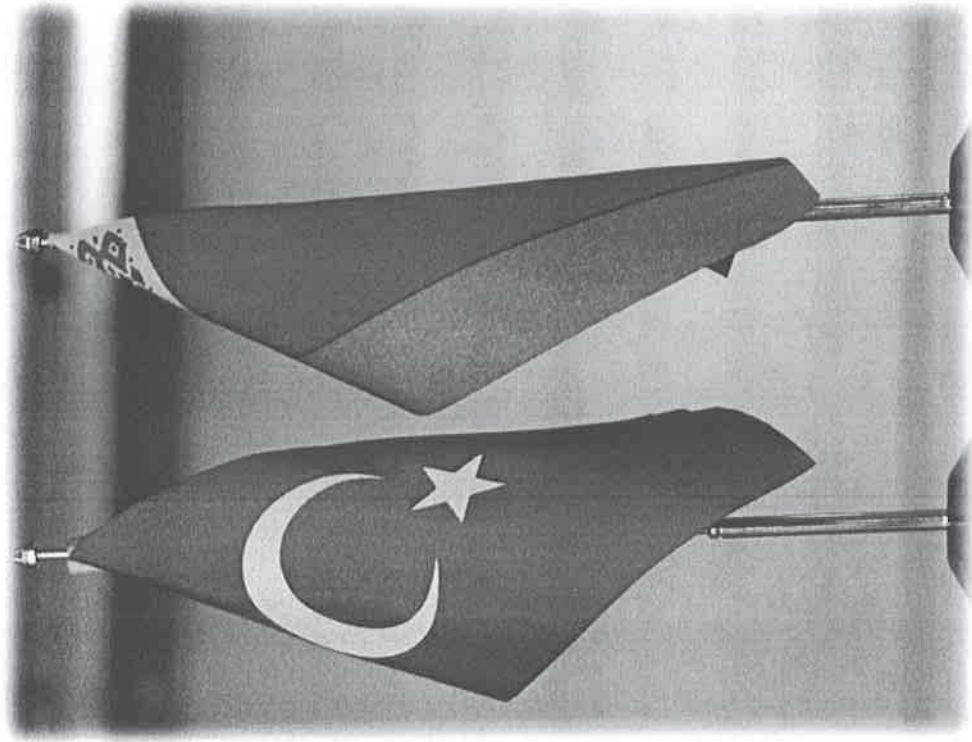
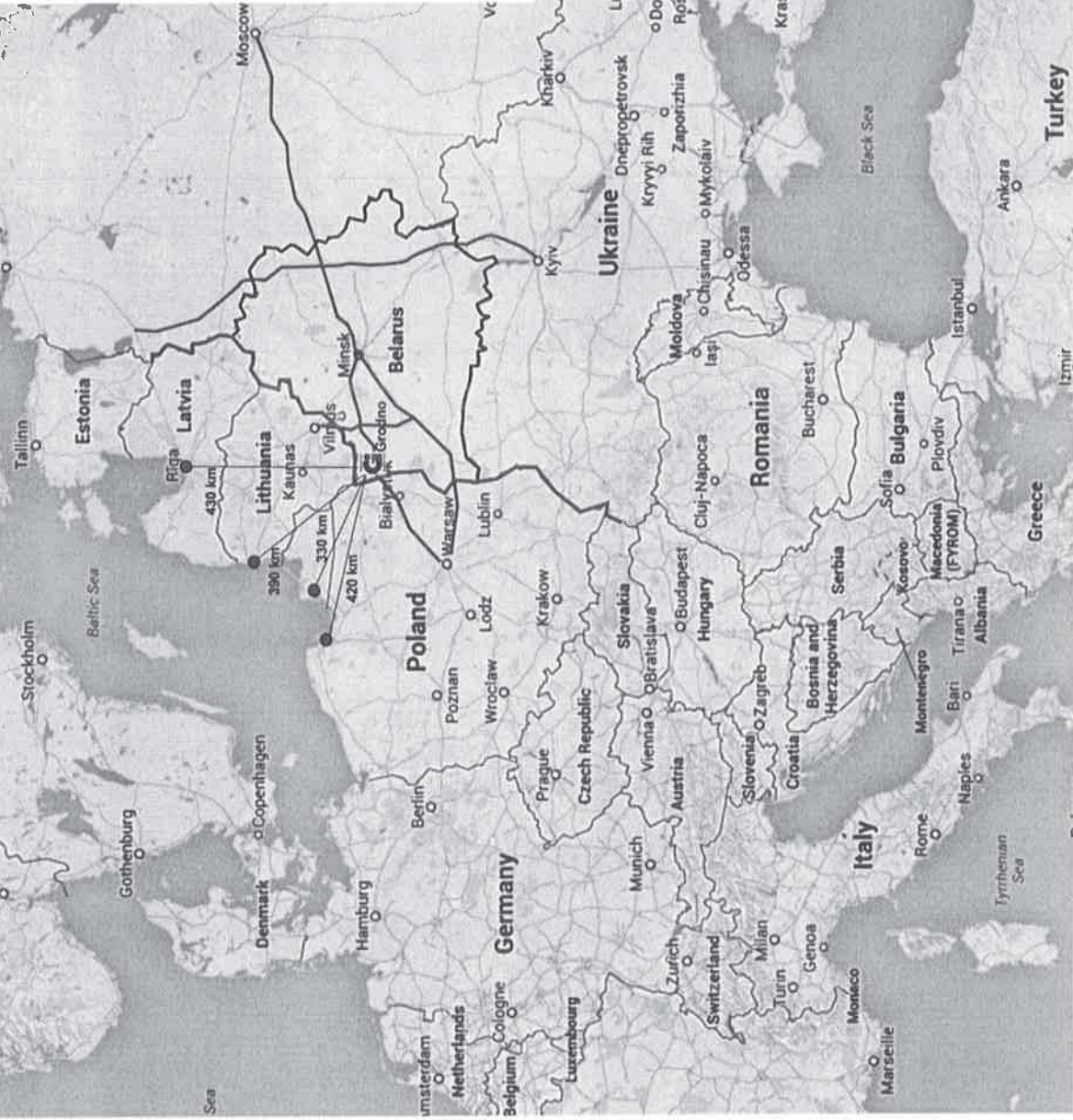


Turkish business opportunities in Belarus and FEZ Grodnoinvest

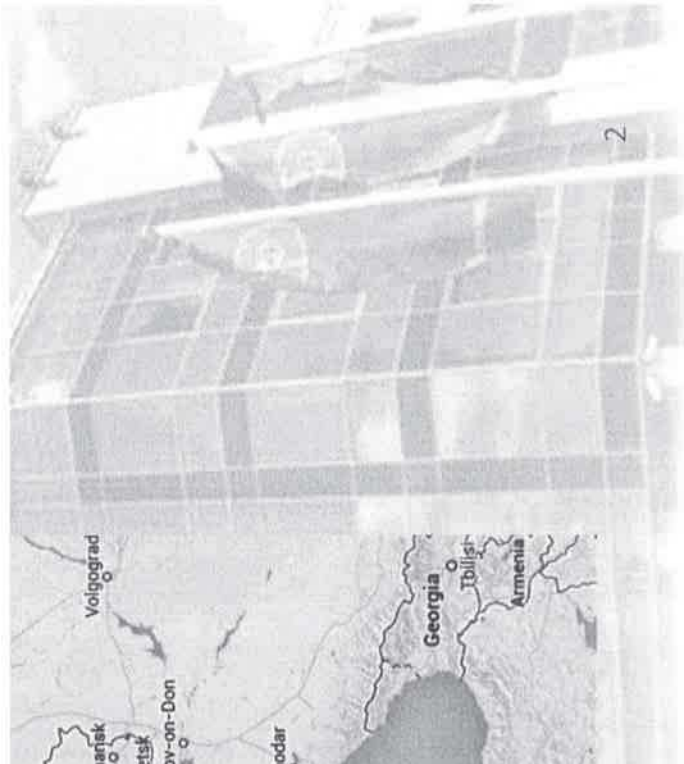


- Advantages of Grodno region-

- Geographical position-



- There are in Grodno region:
- a well-developed system of automobile roads;
 - railway connections with East and West gauge;
 - an international airport;
 - the longest border with EU countries;
 - Grodno is situated
 - 330 km from the port Kaliningrad
 - 390 km from the port Klaipeda
 - 420 km from the port Gdansk
 - 430 km from the port Riga



- Advantages of Grodno region-

- Qualified labor force -

Employee population according to the education level (per 1000 people)

Higher education – 19%

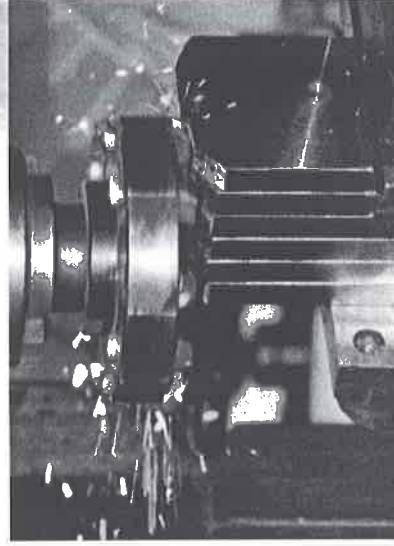
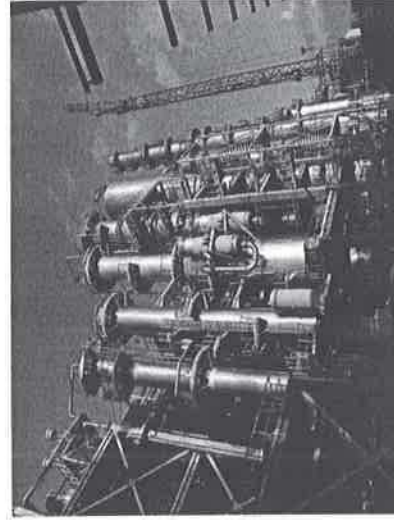
Vocational secondary education – 35%

There are in Grodno region:

- ✓ 4 Universities
- ✓ More than 30 secondary schools
- ✓ Research institutions
- ✓ Opportunities for fast recruiting of
- ✓ High level white and blue collar employees

- Main industry brunches -

- ✓ Chemical production
- ✓ Automotive industry
- ✓ Textile industry
- ✓ Metalworking production
- ✓ Electrical equipment production
- ✓ Building materials
- ✓ Woodworking industry
- ✓ Food industry and agriculture



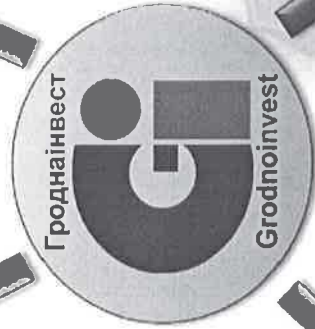
-FEZ "Grodnoinvest" development-

82
resident-
enterprises

44
export countries

20 000
employees work at
resident-enterprises

1 bln. \$
been invested from
35 countries of the
world



1 bln. \$
a year
production
volume

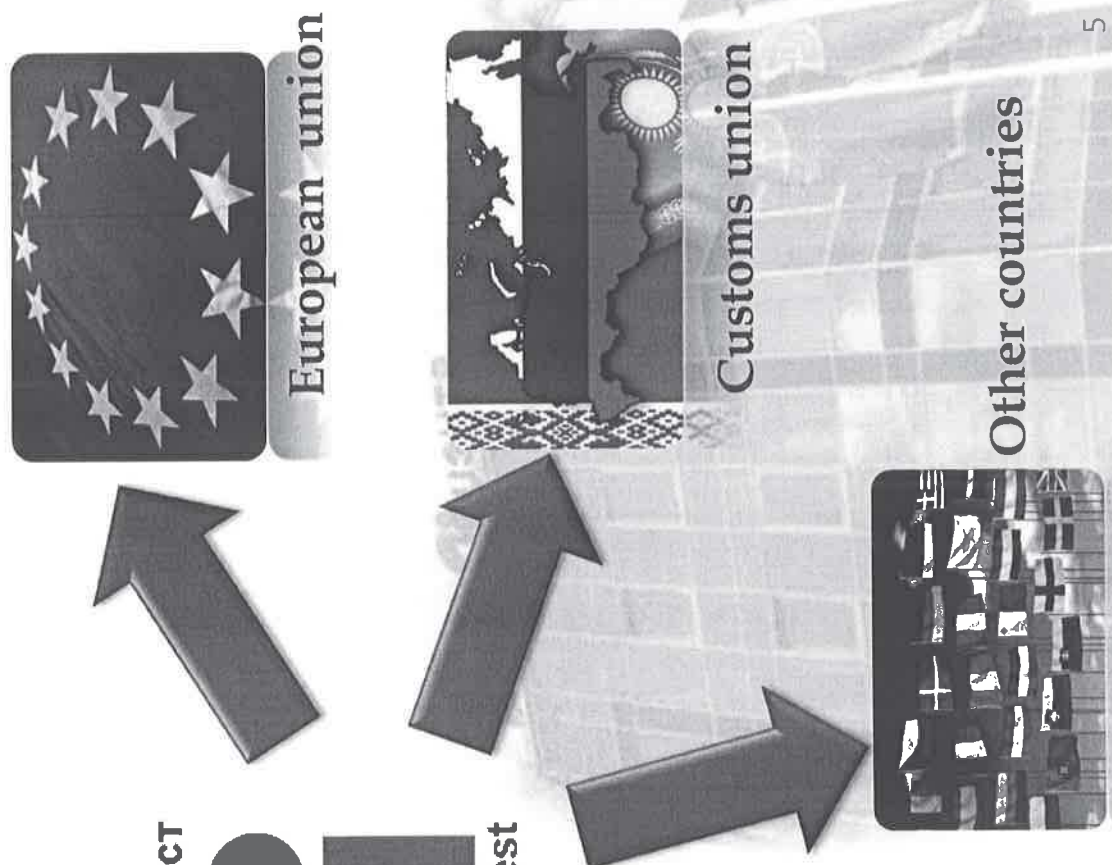
24,8%
average product
profitability

- Establishing production of the leading Turkish companies on the territory of the FEZ -

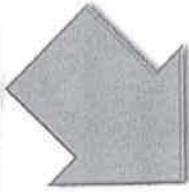
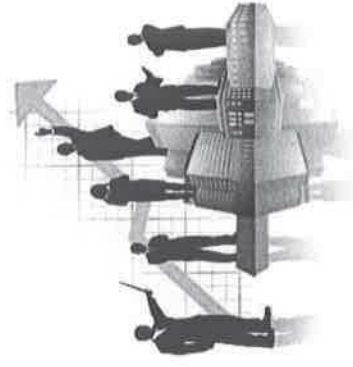
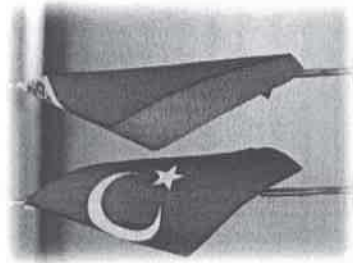


Гроднаінвест
Gi
Grodnoinvest

Turkish companies



- Specialized zone for Turkish investments in Belarus -

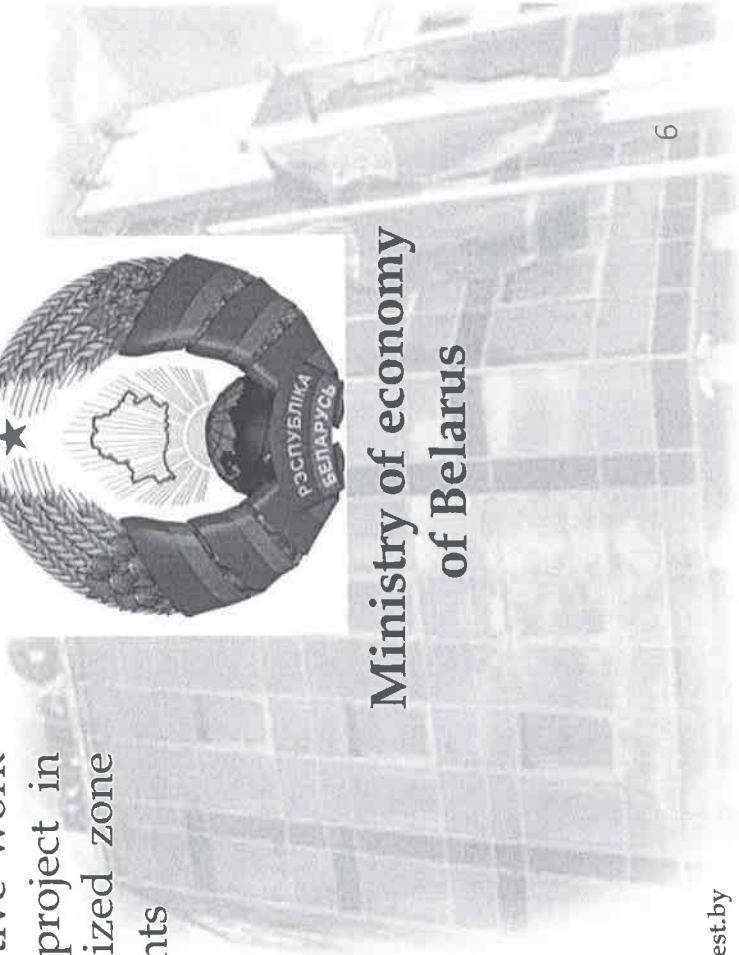


We offer to create a controlling unit among representatives of Turkish part, which is to be engaged in coordinative work in realization of a project in creation of a specialized zone for Turkish investments

Гроднаінвест
Grodnoinvest



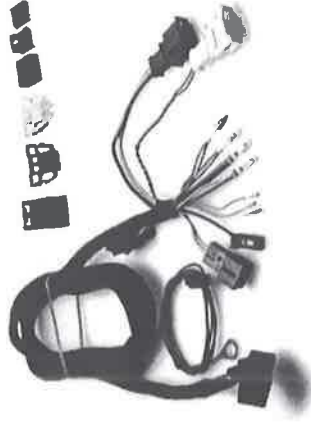
**Ministry of economy
of Belarus**



- Advantages of Grodno region-

-Traditionally formed automobile parts industry-

- Radiovolna JSC
- Shuchin plant Autoprovod
- Belcard JSC



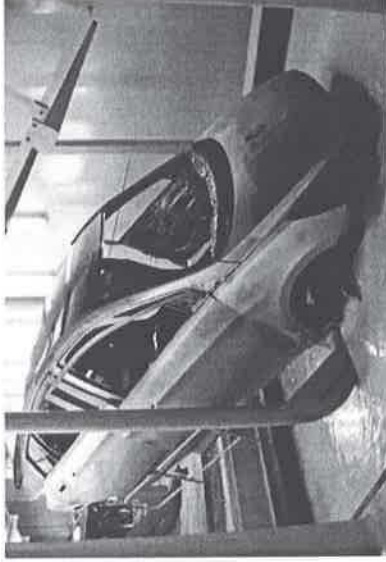
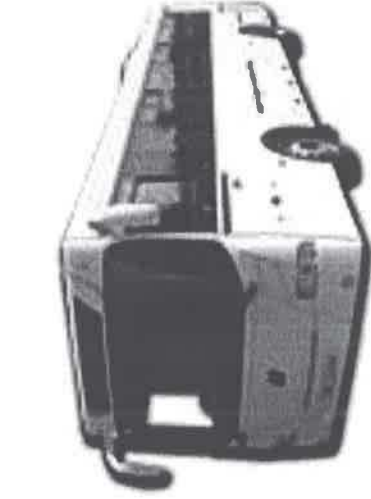
Products:

- heat exchangers
- cardan shafts
- break systems
- generators
- cable systems and harnesses

- Advantages of Grodno region-

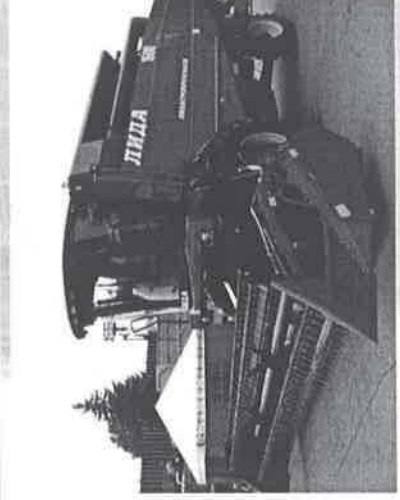
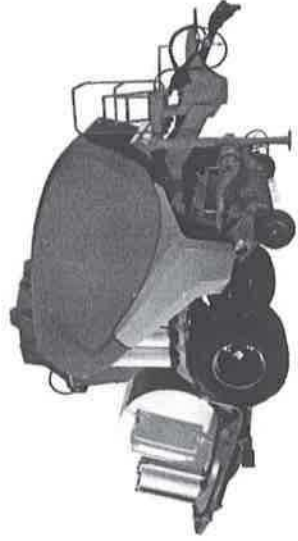
-Traditionally formed automobile parts industry-

- Lidagroprommash
- Biocom Technology
- Lida buses Neman
- Konus State enterprise



Products:

- buses
- zinc-plating using a hot galvanizing method
- combine harvesters
- balers



- Companies business offers for cooperation-

- Grodno footwear factory "Neman" JSC -

Company's profile

Grodno footwear factory «NEMAN» JSC - one of the oldest enterprises in Belarus - established a reputation as a manufacturer of quality, comfortable, fashionable footwear made of natural materials for men, women and children.

Business offer

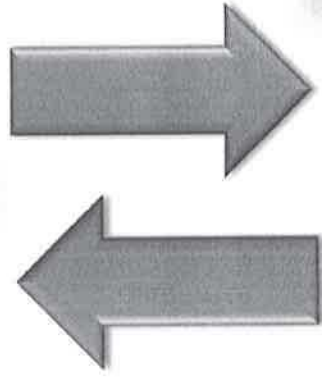
The enterprise is interested in the expansion of footwear production for men, women and children.




- Cooperation in the field of chemical industry -



Turkish chemical industry
 companies



Cooperation with
 local companies




ЛІДІА

ЛІДІА

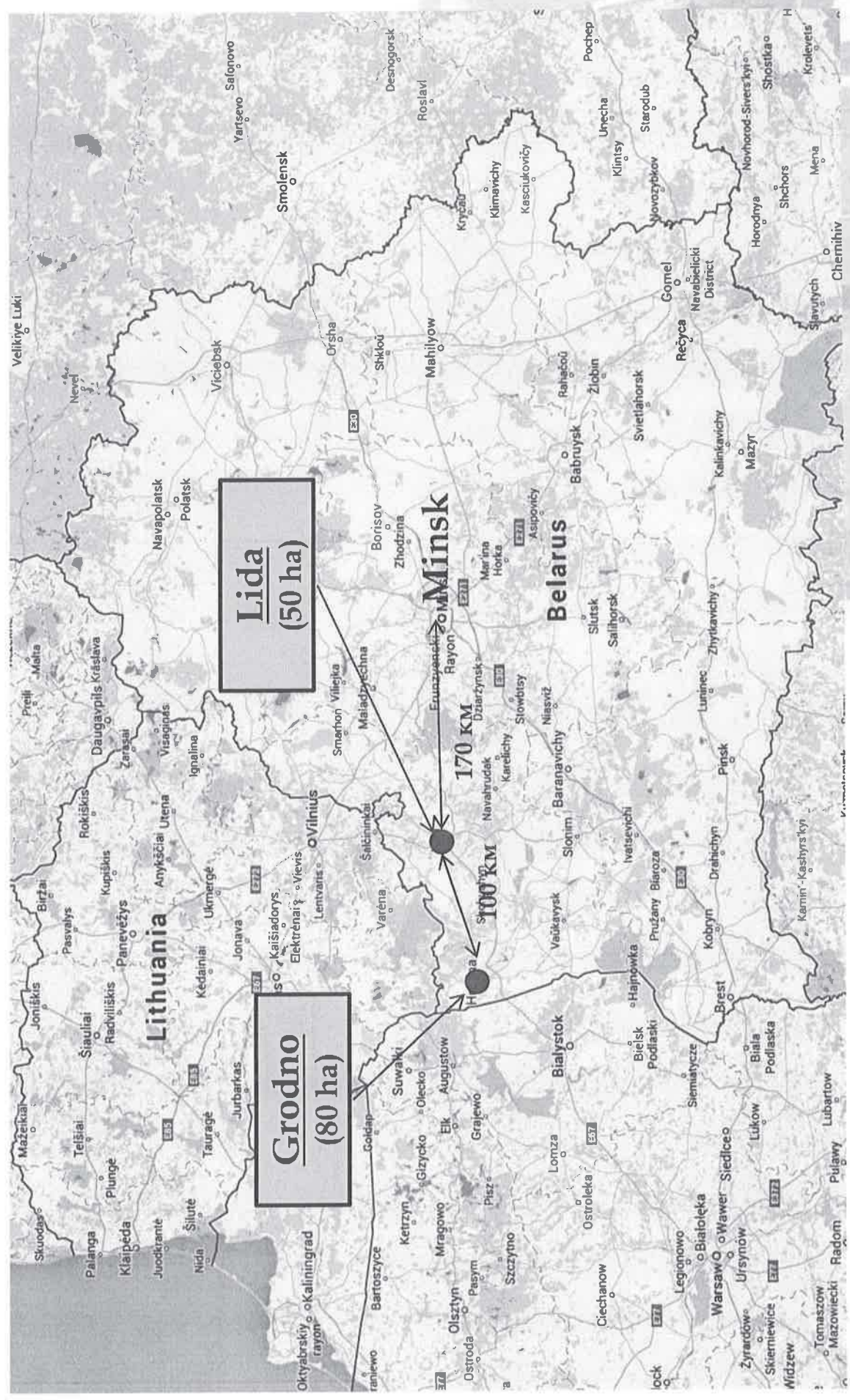
ЛІДІА

ЧИСТЯЩИЕ САЛЕТКИ
 для удаления жира и грязи



11

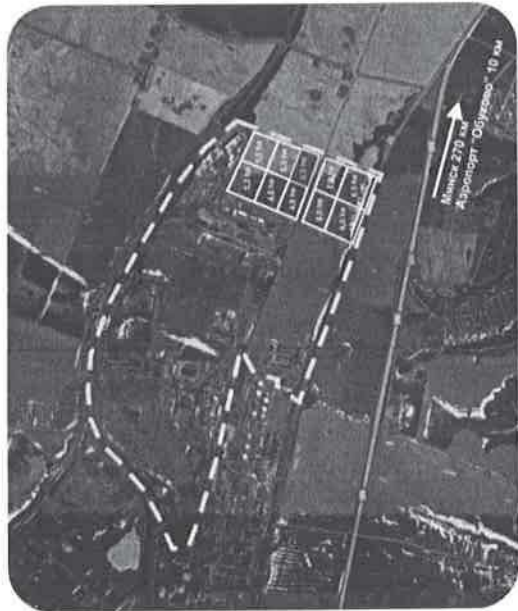
-Places in Grodno region for creation of zone for Turkish investments -



-Free land plots for automotive components production- 215 ha -(green field projects)

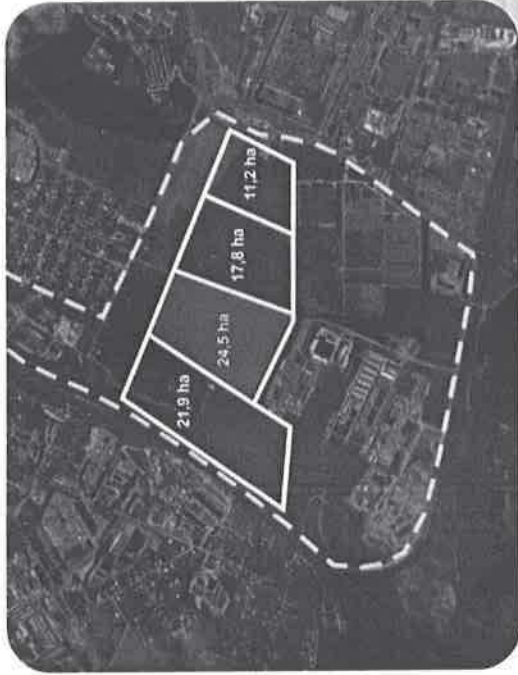
Plot №4

("Auls") - 60 ha



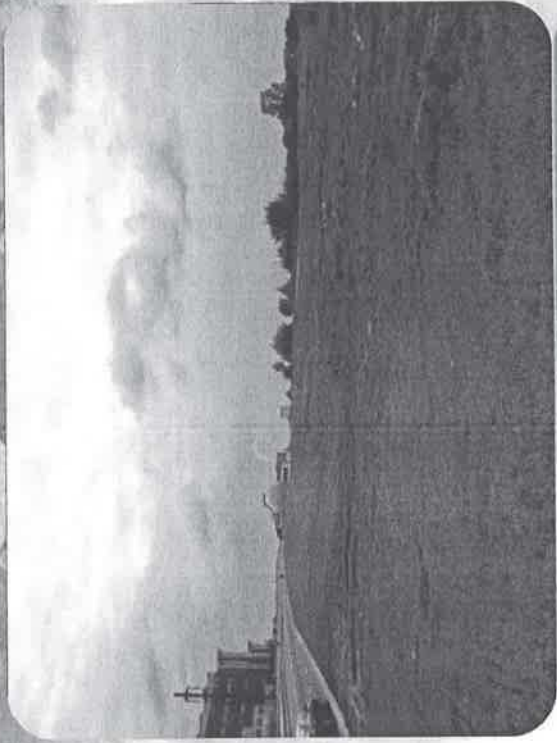
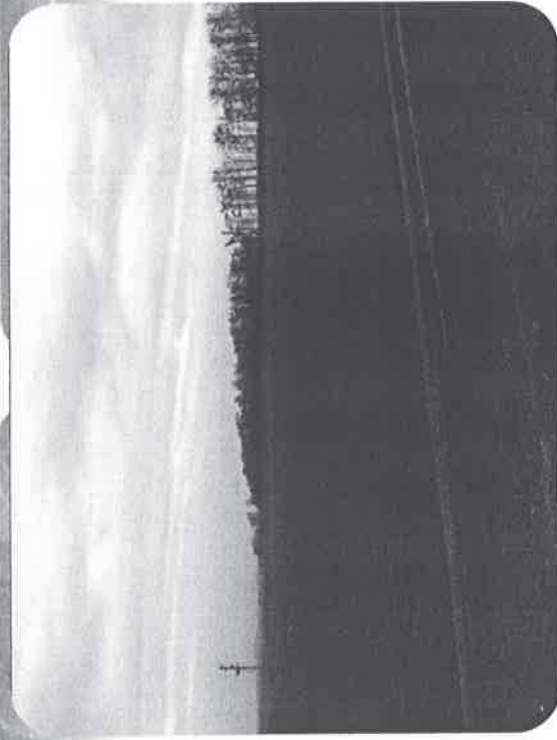
Plot №5

("Kolbasino") - 75 ha



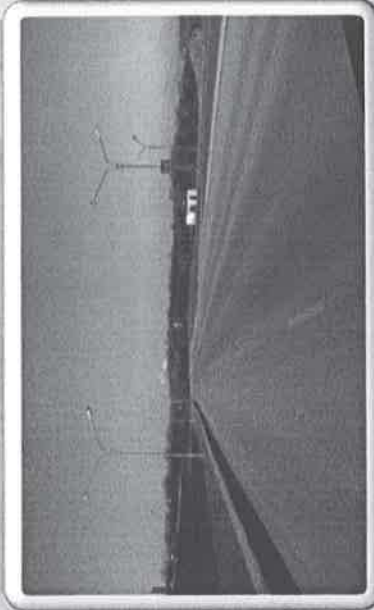
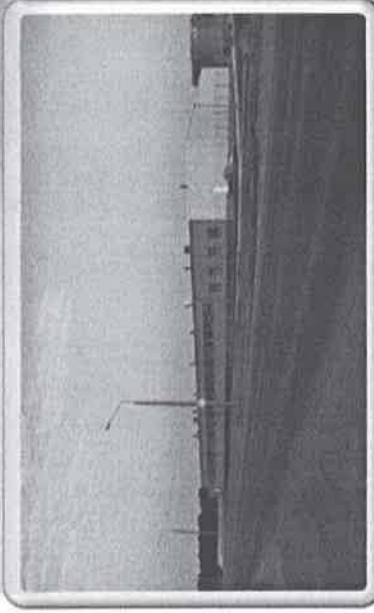
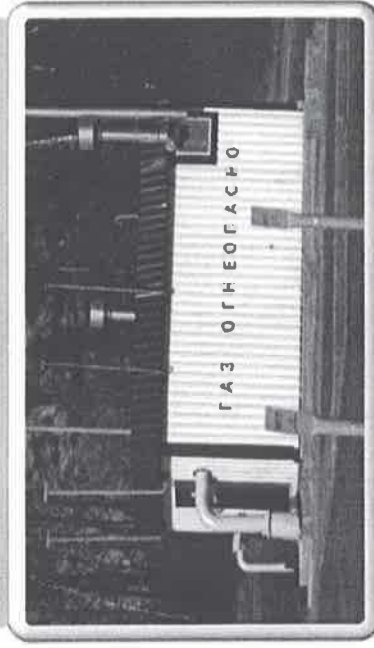
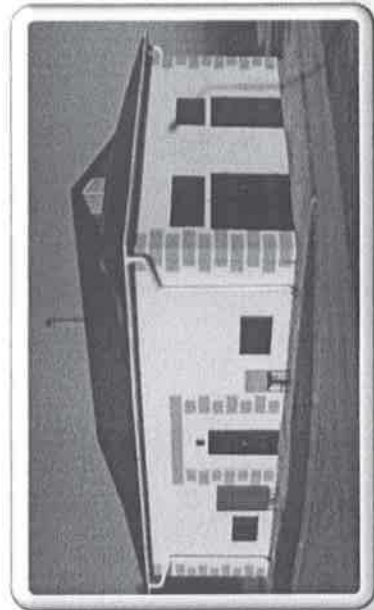
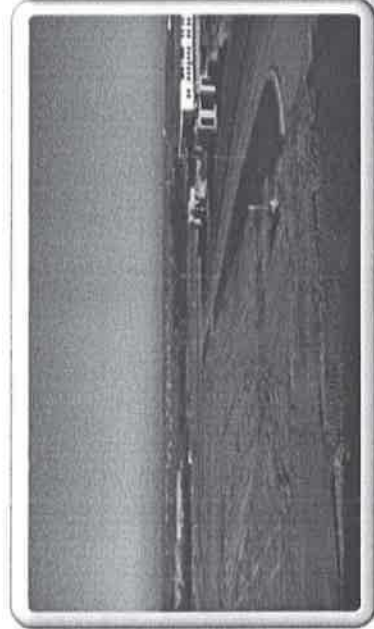
Plot №6, Lida

("Zapadnyi") - 80 ha



- Engineering & transport infrastructure development -

The FEZ "Grodnoinvest" creates infrastructure objects and donates them to the residents.



- Companies' business offers for cooperation-

- Radiovolna JSC -

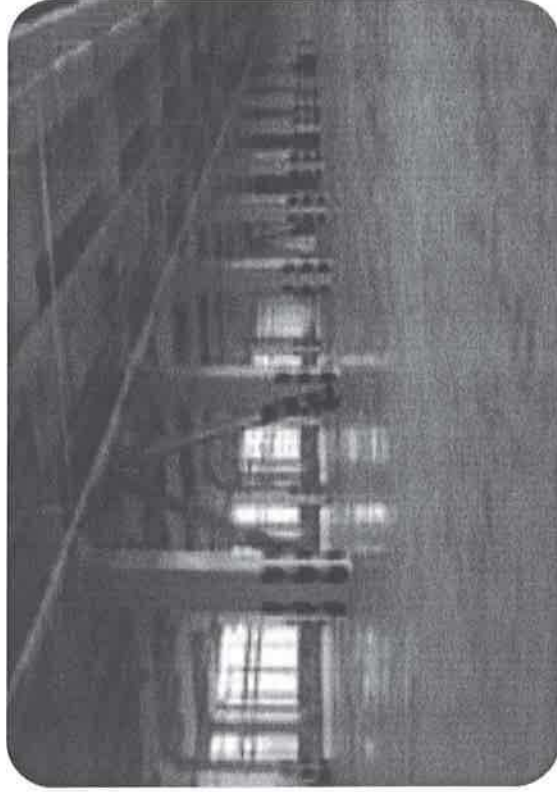
Company's profile

The Joint Stock Company Radiovolna is a diversified industrial enterprise, working for the machine building sector for more than 35 years already. It is a company, focused on implementing new technologies in the production process and expanding its own product market. The enterprise has convenient road approaches, all utilities and networks.

Business offer

For the implementation of investment projects Radiovolna JSC has highly skilled engineering and production personnel as well as free manufacturing area (20 000 m²).

The company is interested in the joint production of spare parts or other forms of cooperation.



- Companies business offers for cooperation-

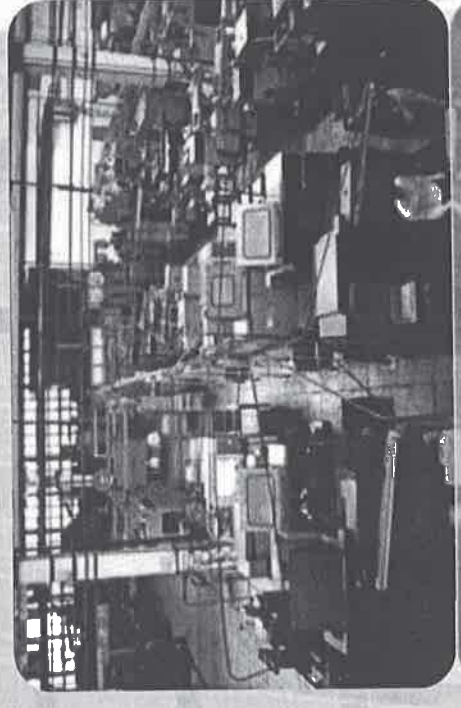
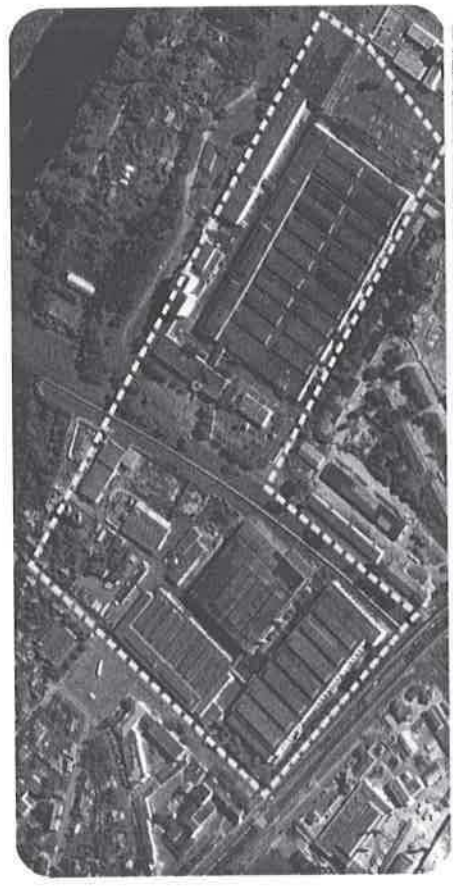
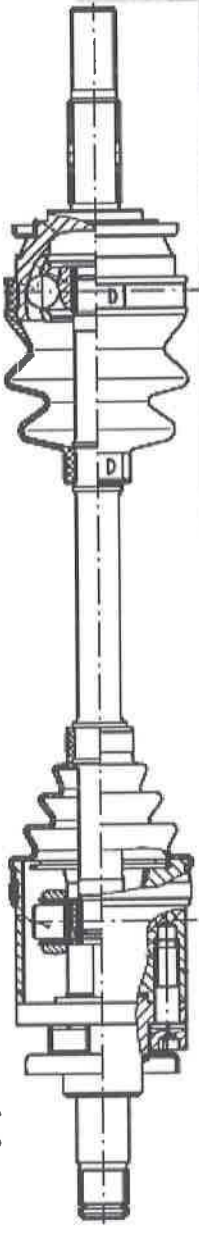
- Belcard JSC -

Company's profile

Belcard JSC is a modern enterprise equipped with heavy-duty metalworking and forging equipment. The plant consists of Mechanical Assembly Division, Forging and Pressing Division, Mechanism and Tool Division as well as a number of support services and shops. The Divisions are well equipped to produce drive shafts of up-to date technical niveau. The company is proud of its well-trained staff. The company offers 10 000 m2 of free manufacturing area.

Business offer

The enterprise is interested in realization of the project **"Production of drive shafts for cars equipped with constant velocity joints and drive shafts "** or other forms of cooperation.



- Companies business offers for cooperation-

- Shchuchin plant "AVTOPROVOD" JSC -

Company's profile

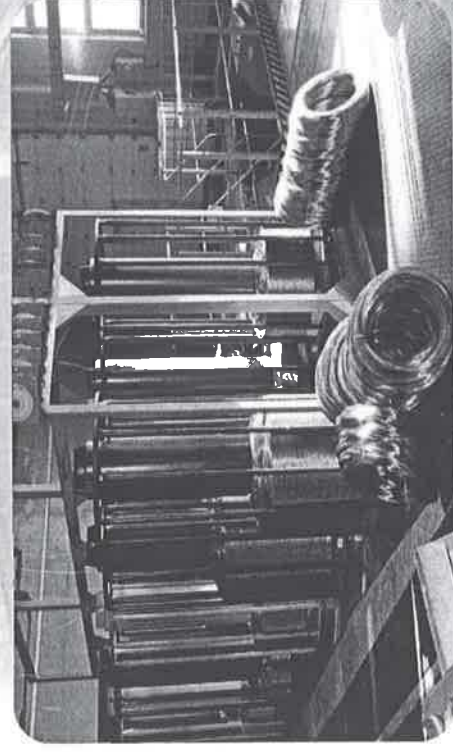
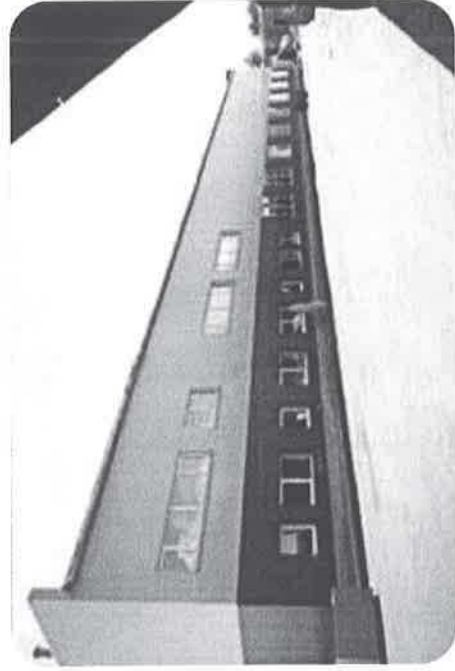
The plant "Avtprovod" was founded in 1958. Over 55 years Shchuchin plant "Avtprovod" JSC occupies a leading position in the market of cable products. Now the plant manufactures more than 250 trade-marks of cable products with copper and aluminium conductors with PVC and PE insulation, and also a wide range of wire bundles.

Business offer

Schuchin plant "Avtprovod" JSC offers favorable conditions for cooperation:

- a high level of product quality;
- acceptable prices;
- flexible system of discounts;
- individual approach to each client.

The company is interested in the joint production of cable systems.



- Companies business offers for cooperation-

- State unitary enterprise "Konus" -

Company's profile and business offer

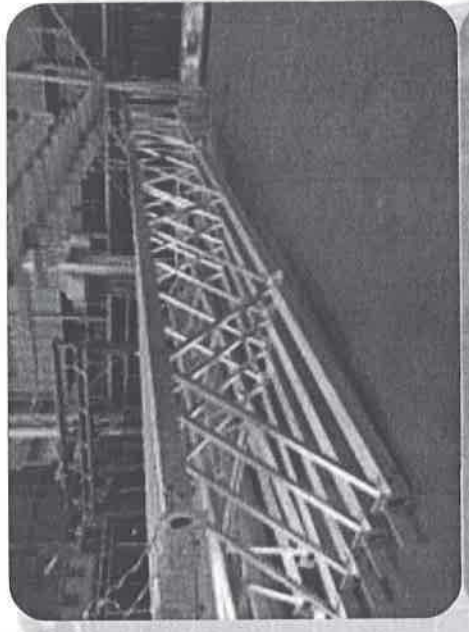
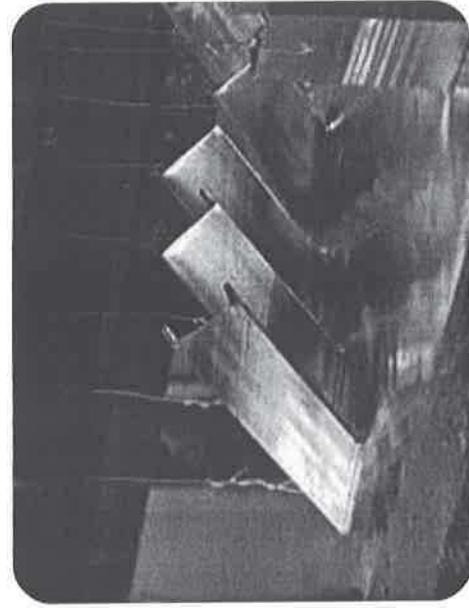
A state unitary enterprise "Konus" offers high-quality service of large-size hardware zinc-plating using a hot galvanizing method.

Zinc-plating is made from the outside as well as from the inside of the wares.

The galvanizing bath allows zinc-plating of hardware weighing up to 6 tons (in some cases when design documentation of the customer has been agreed – up to 7,2 tons), with HWD 14,5x1,6x3,2 m.

The enterprise offers freight services using own transport.

Moreover, the enterprise produces hardware using the customer's design.



- Companies business offers for cooperation -

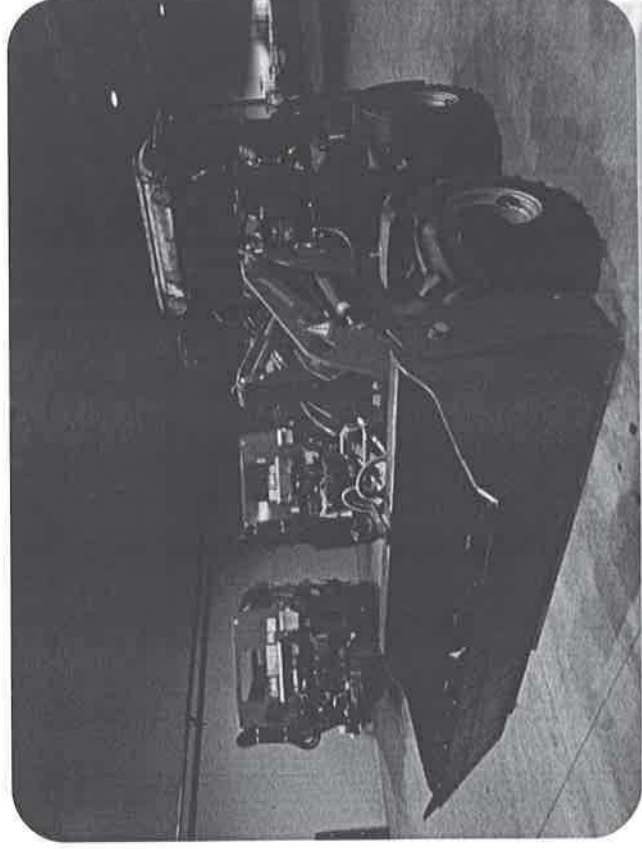
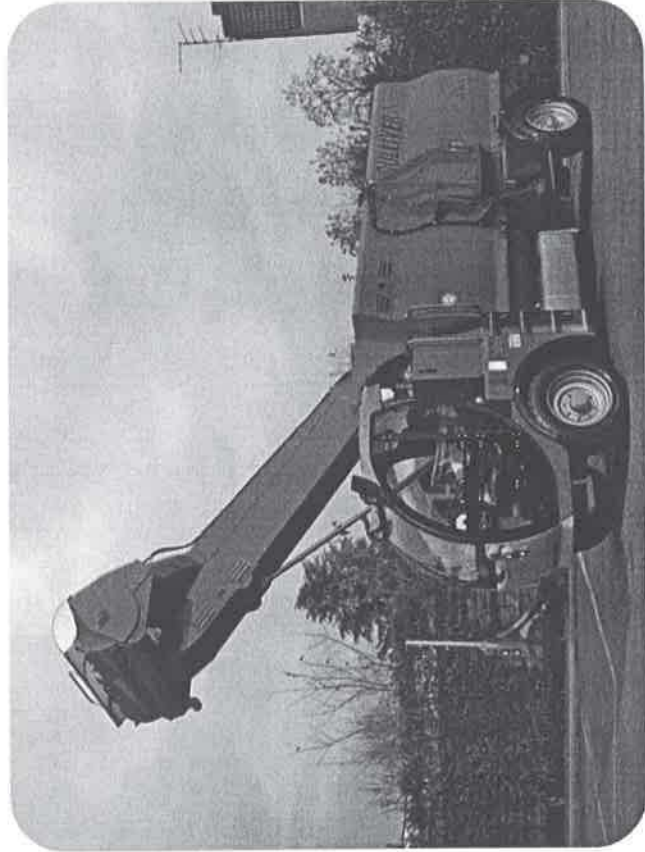
- Biocom Technology Ltd -

Company's profile

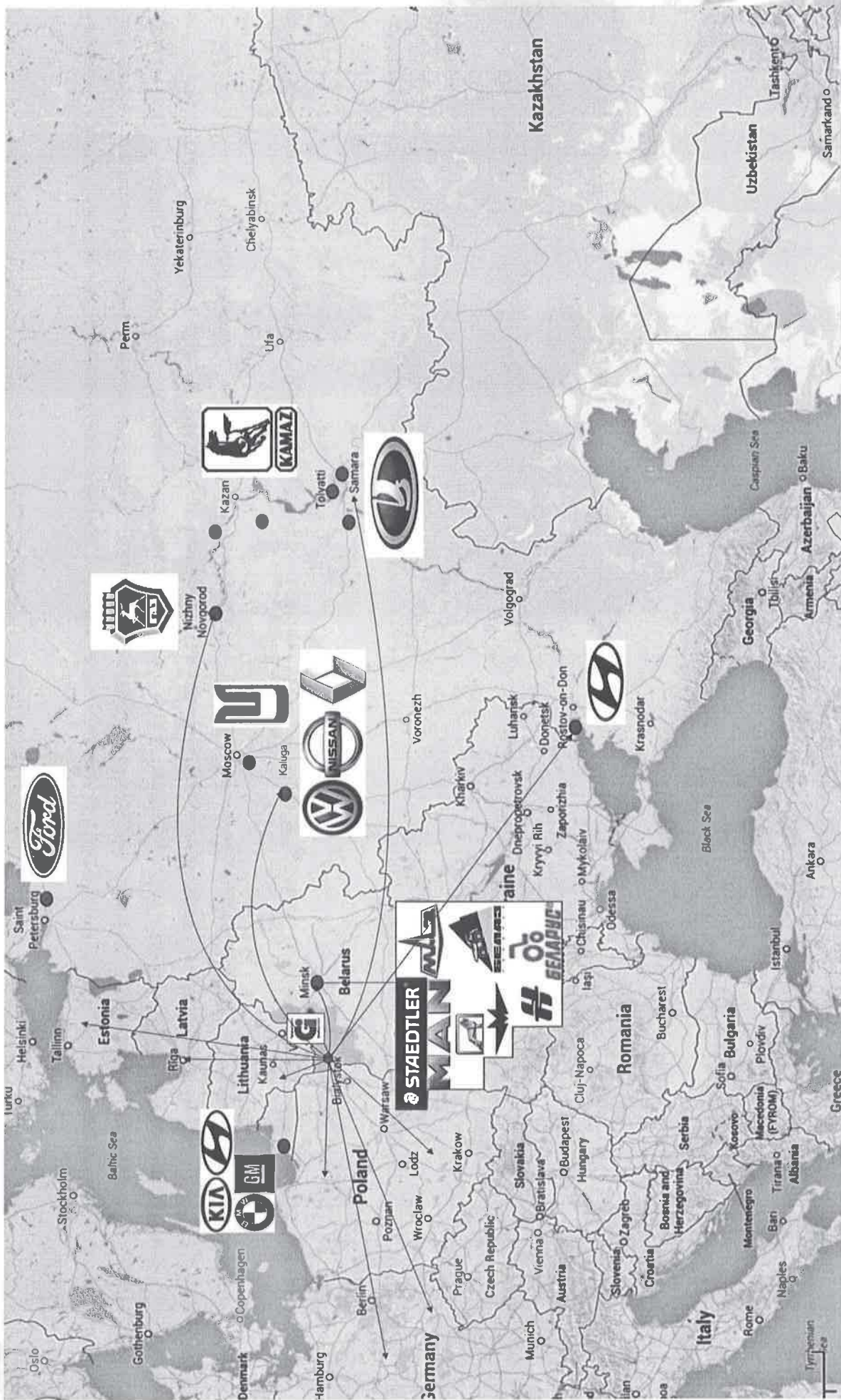
Biocom Technology Ltd. is an innovative, rapidly developing and growing enterprise which carries out automation of milking farms and labor-intensive processes in animal breeding, ensures technical and technological service for agricultural organizations, and produces milking robots, baler/wrappers, feed dispensers, bale openers, ventilation systems for barns, bale wrapping film and other up-to-date and technically advanced equipment of universal importance.

Business offer

The enterprise is interested in establishing cooperation with Turkish companies in producing of metal parts for automotive industry.



- Perspective markets



Customs Union: a common customs territory

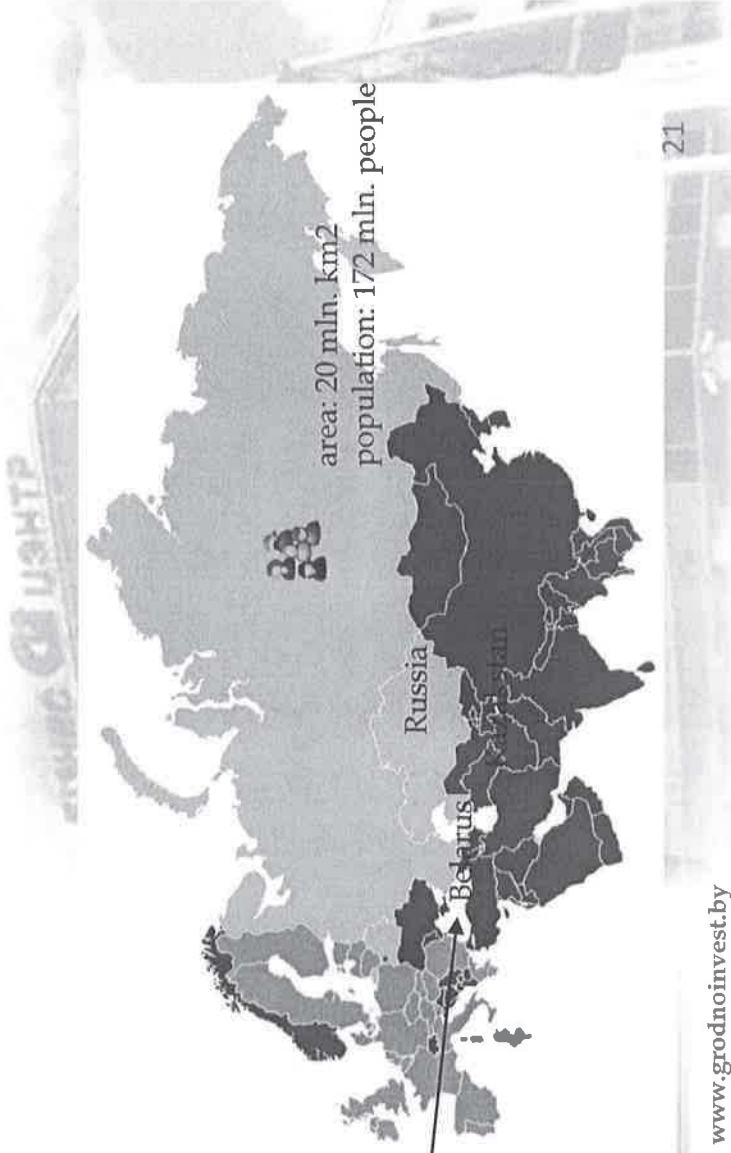
import of goods into the common customs territory

common customs tariff

imported goods put in the free circulation in Belarus, freely circulate in the territory of Russia & Kazakhstan

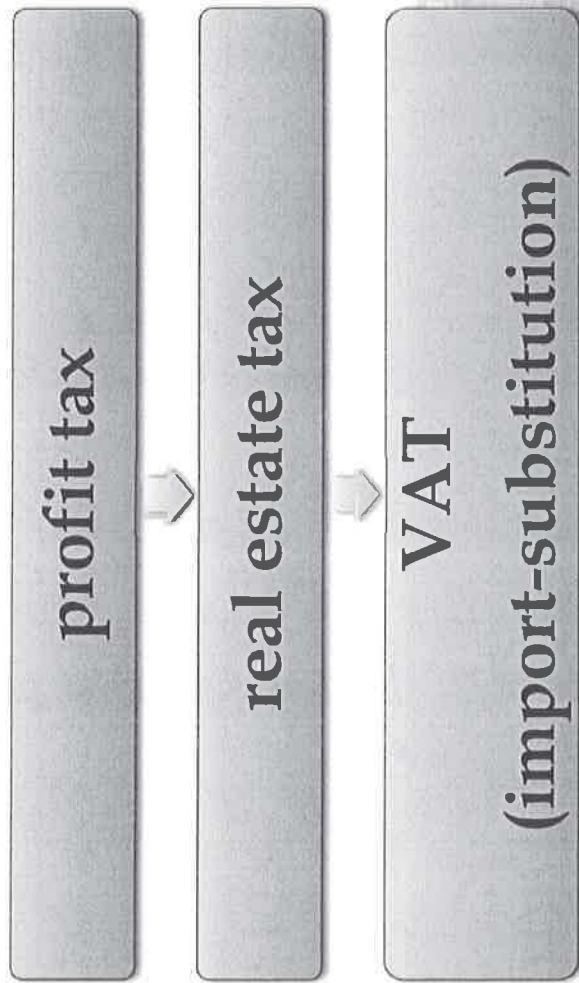
customs duties on imported raw materials that make part of finished products **ARE NOT PAID** when these finished products are exported beyond the Customs Union

FEZ Grodnoinvest



-Customs Union-

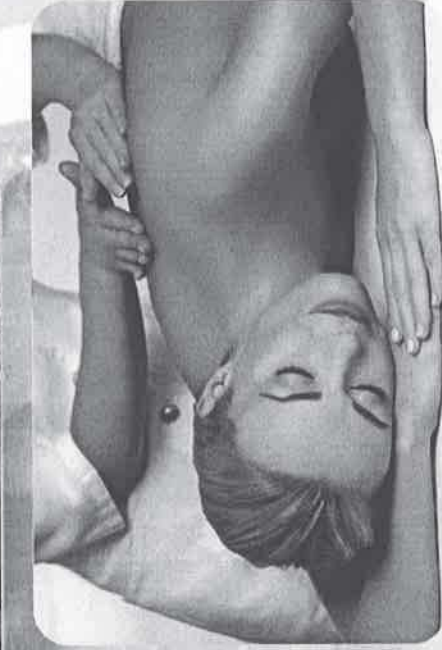
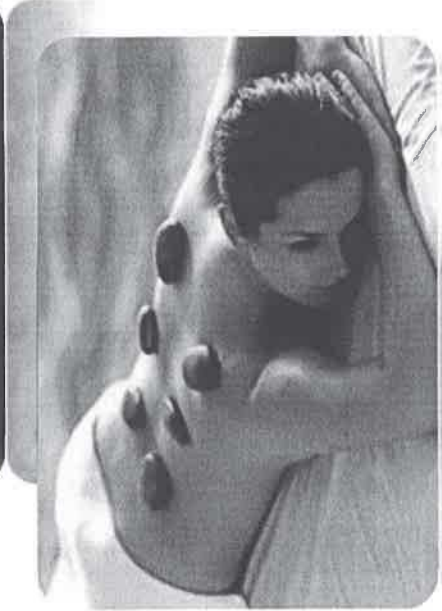
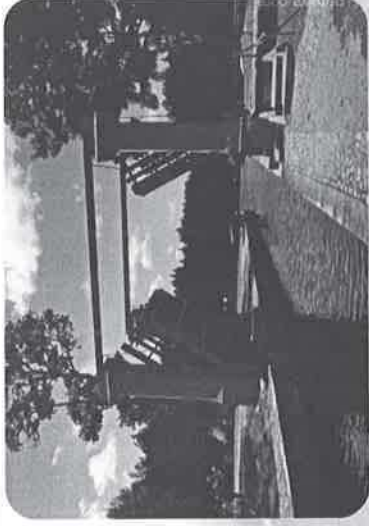
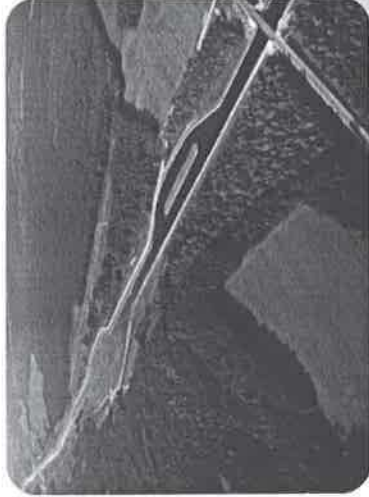
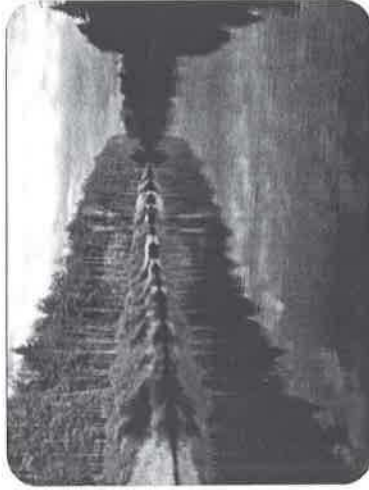
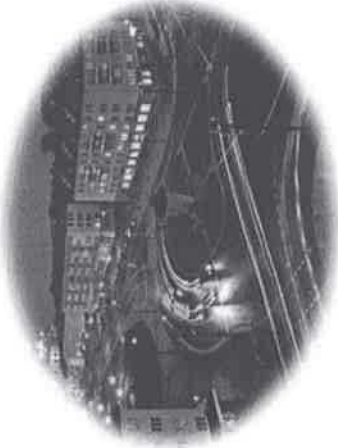
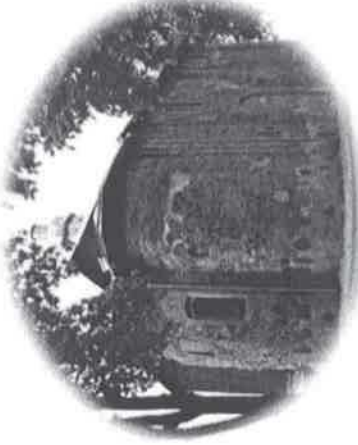
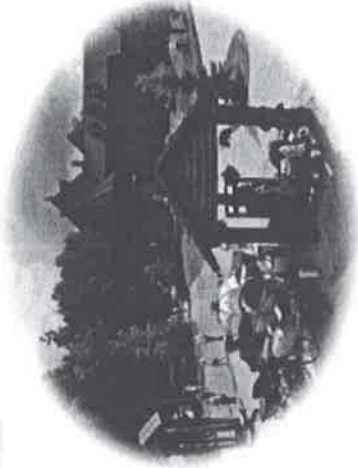
TAX PREFERENCES



The tax load for residents of
FEZ Grodnoinvest is 30%
lower

-30%

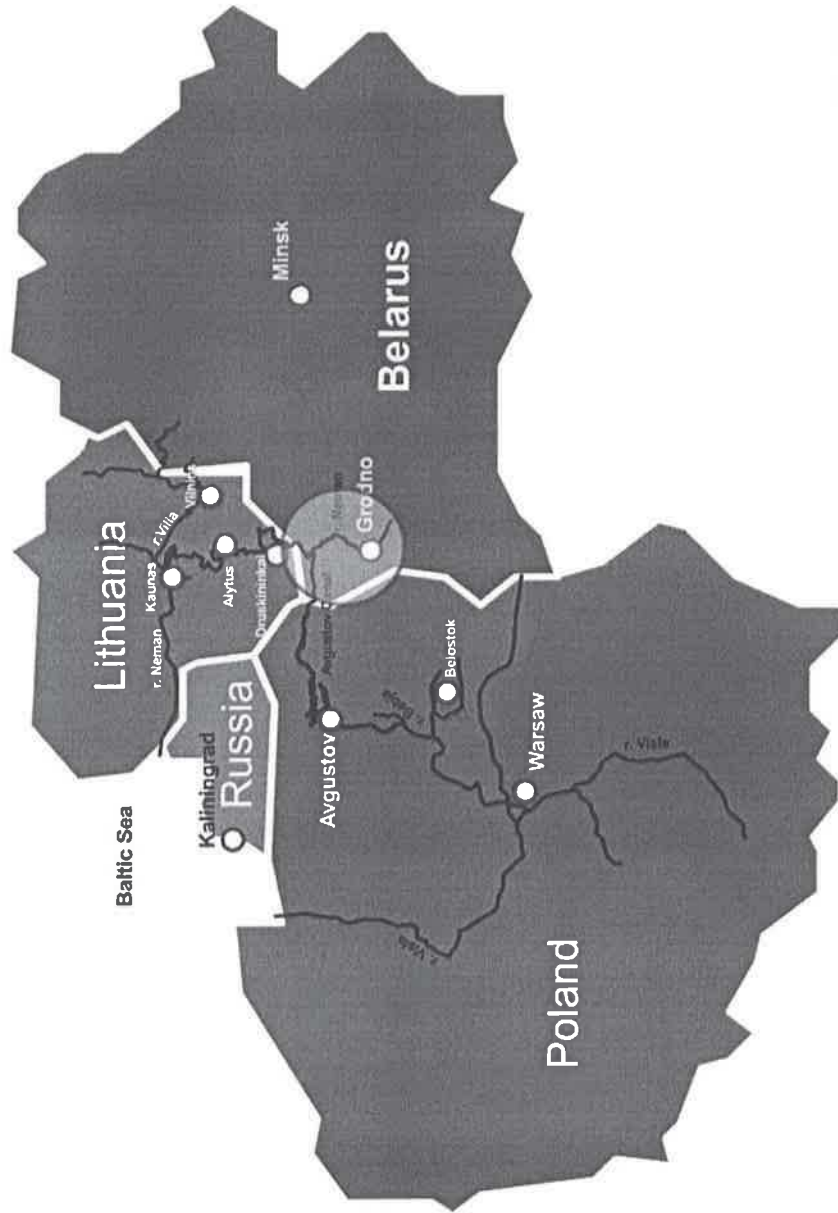
-Grodno region as a combination of business, recreation and pleasure-



Tourism cluster

- Park «Avgustov canal» -

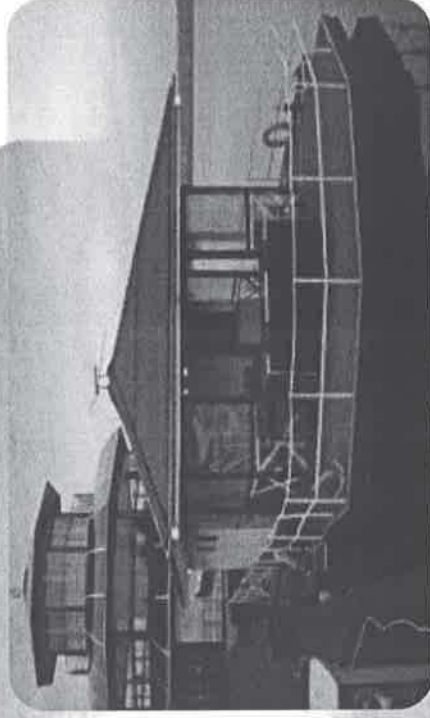
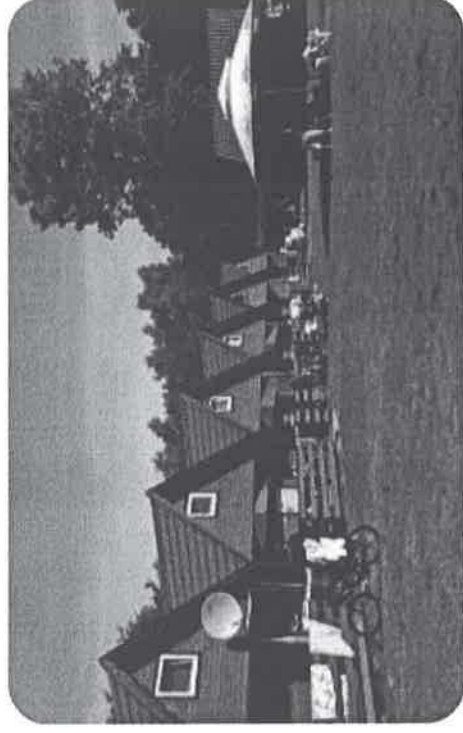
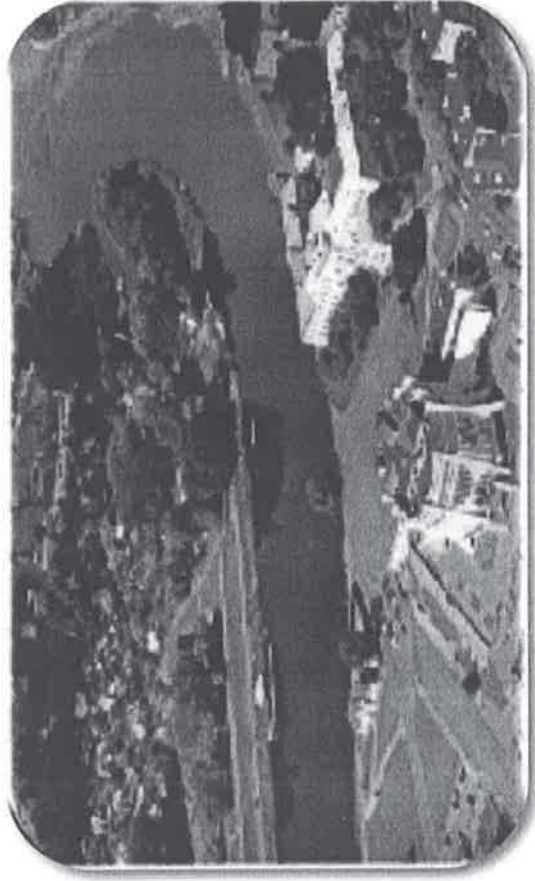
The total area amounts to 5 749,88 ha and includes the territories of the Belarusian part of the Canal and the bed of the river Neman together with the adjacent territories



- Park “Avgustov canal” -

Priority projects:

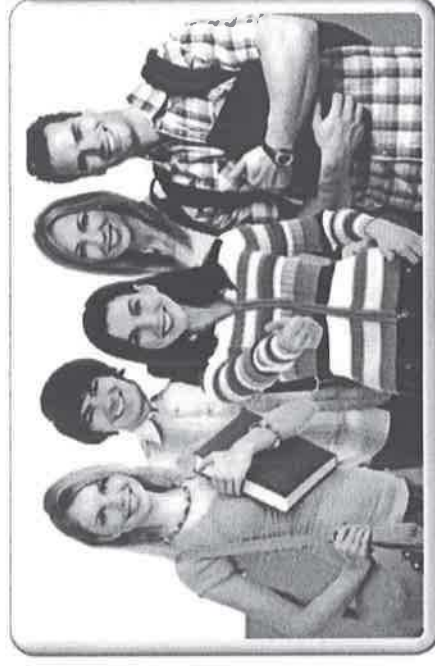
- Creation of a SPA-complex
- Creation of a hotel complex
- Creation of an entertaining VIP-Club
- Creation of a café
- Sanatorium and recreational complexes



Special tourism and recreation park Avgustov Canal

+375 152 41 86 87, info@grodnoinvest.by

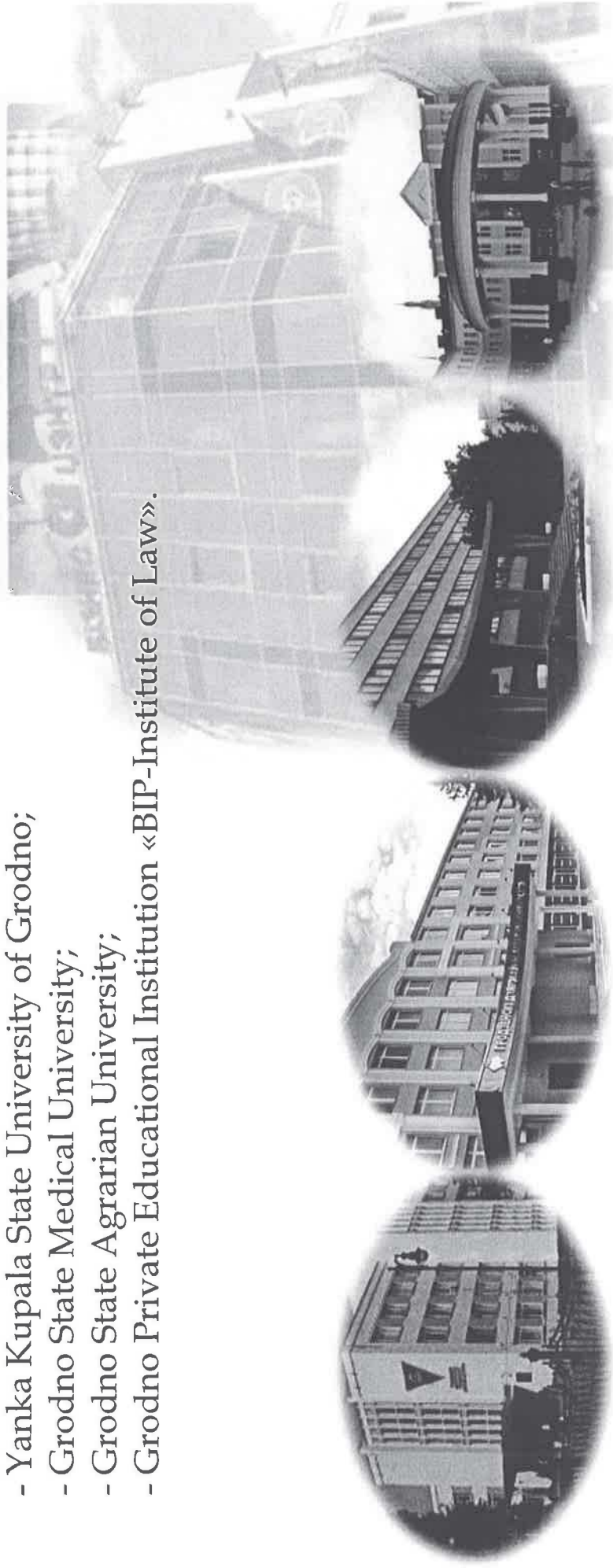
Directions of joint activity in the sphere of tourism



1. Educational tourism

In Grodno region there are 4 institutions of higher education:

- Yanka Kupala State University of Grodno;
- Grodno State Medical University;
- Grodno State Agrarian University;
- Grodno Private Educational Institution «BIP -Institute of Law».

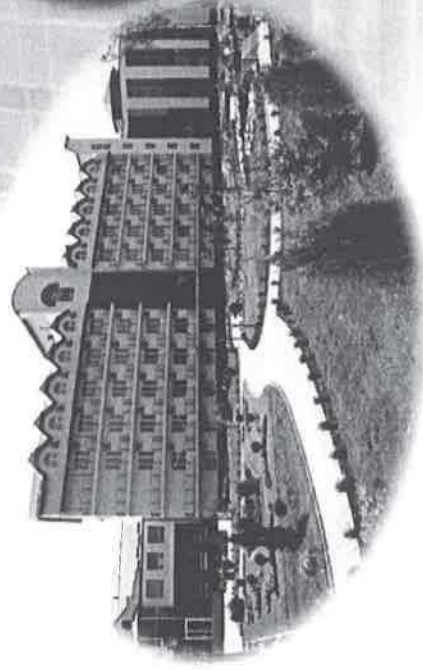
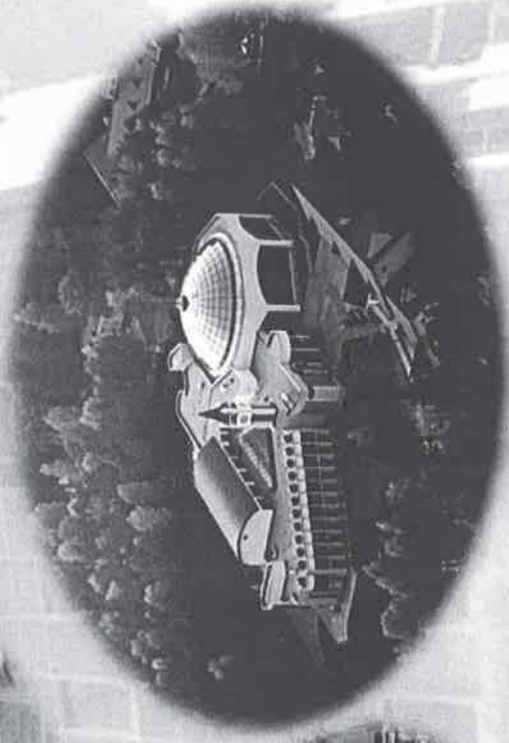
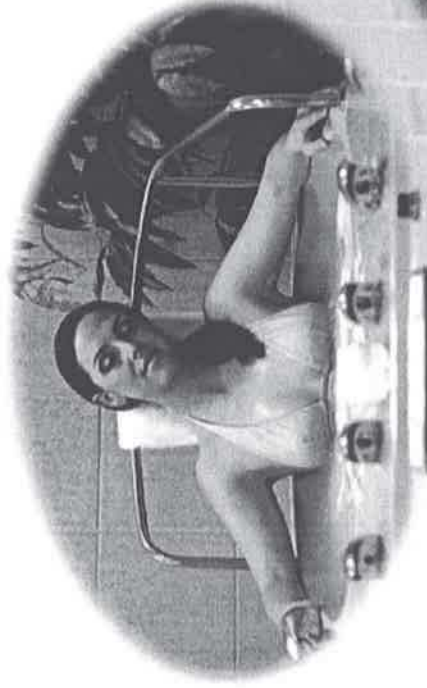


2. Medical & Health Tourism

In Grodno region there are many proposals due to the organization of leisure and wellness in sanatoriums and health resorts.

Wellness in Belarus is a combination of decent quality and reasonable price, as well as a sophisticated balance of traditions and modernity.

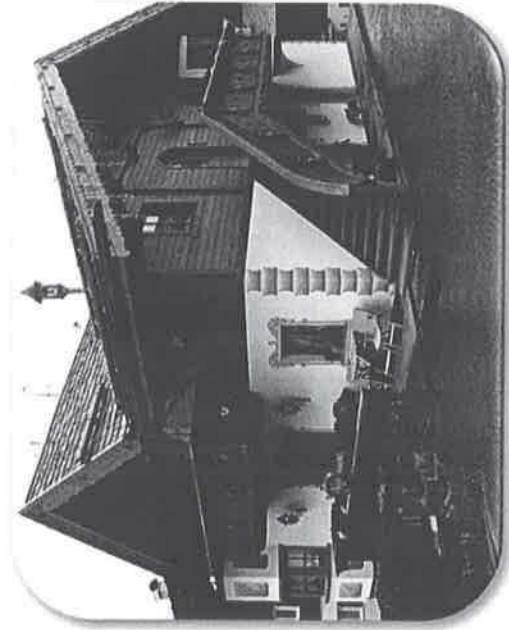
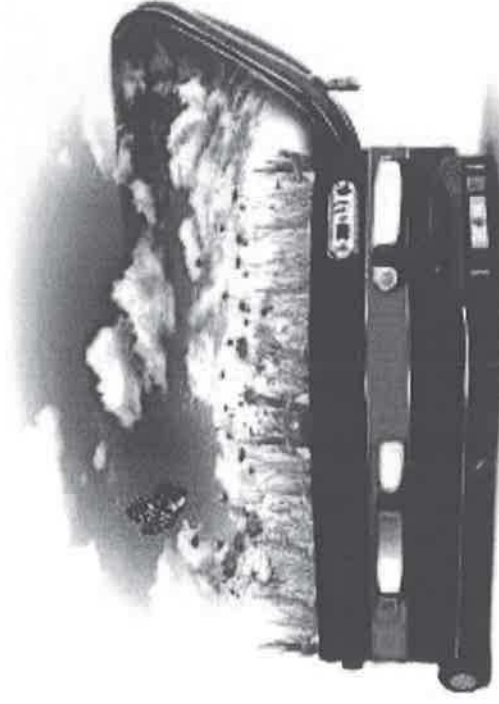
- sanatorium Ozerny
- sanatorium Porechye
- sanatorium Zhemchuzhyna
- sanatorium Energetic
- sanatorium Radon
- Sanatorium Neman-72





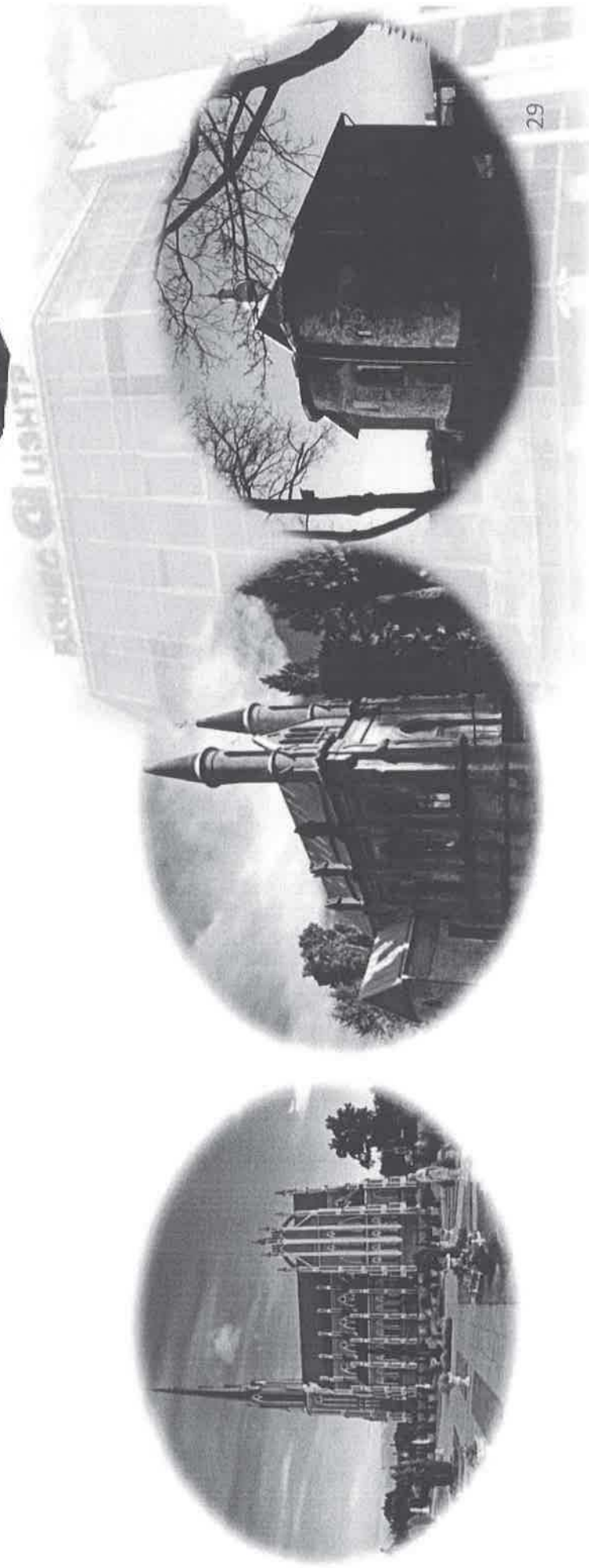
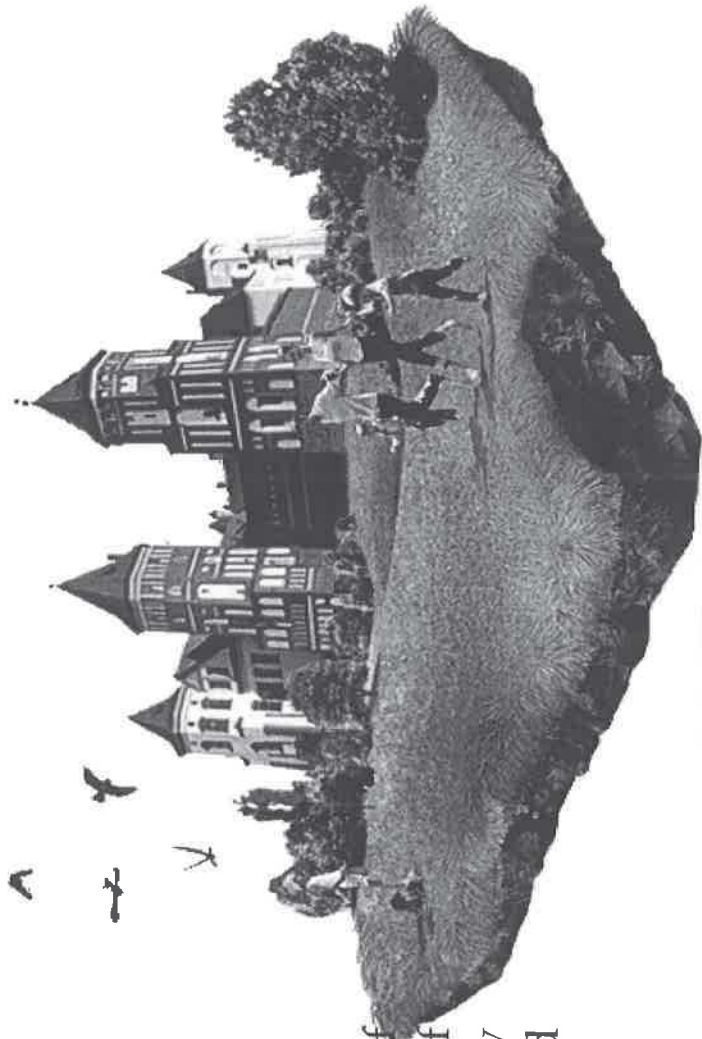
3. Agrotourism

Rural tourism offers an opportunity to get acquainted with ethnographical features of Belarusian region, to taste ecologically clean food and national Belarusian dishes. Nowadays many farmsteads successfully work and receive guests in Grodno region. All of them are situated in picturesque places near rivers, lakes and forests.



4. Cognitive tourism

Grodno region - an architectural pearl of Belarus. Its cultural heritage consists of magnificent architectural ensembles. They depict monuments of different epochs and styles.



Address
230005
Republic of Belarus
Grodno
Gorkogo street, 91a

Tel: +375 (152) 43-01-75
Fax: +375 (152) 41-86-87

info@grodnoinvest.by
<http://www.grodnoinvest.by>

